

Fabric Requirements



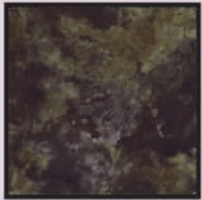
**CX2932 Grey
Just Rocks**
1-1/4 yards



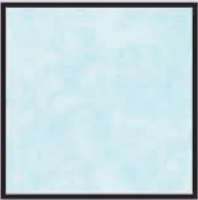
**CX3591 Winter
Snow Chateau**
2/3 yard



**CX3592 Winter
Snowy Woods**
2/3 yards



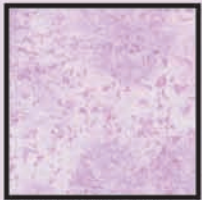
**CX3060 Stone
Water Spot**
3/8 yard



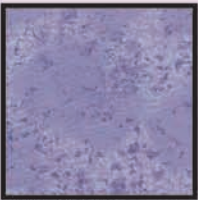
**K1060
Krystal**
Fat Quarter



**CM376 Glimmer
Fairy Frost**
Fat Quarter



**CM376 Orchid
Fairy Frost**
Fat Quarter



**CM376 Blossom
Fairy Frost**
Fat Quarter



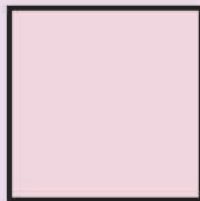
**CM376 Wedgewood
Fairy Frost**
Fat Quarter



**CM376 Powder Blue
Fairy Frost**
Fat Quarter



**Backing
Your Choice**
55" x 55"



Batting
55" x 55"

Snow Chateau



Quilt measures approximately 50" x 50"

Quilt designed by Marinda Stewart



118 West 22nd Street 5th Floor New York, NY 10011
Tel: 212-704-0774 Fax 212-633-0272 Email: info@michaelmillerfabrics.com
www.michaelmillerfabrics.com

Snow Chateau

Quilt designed by Marinda Stewart. Quilt measures approximately 50" x 50"

Always measure the quilt top before cutting border lengths.

Fabric	Yardage	Cutting
CX2932 Grey	1-1/4 yards	Cut two 2-1/2" x 33-1/2" strips and two 1-1/2" x 22-1/2" strips from the width of fabric (WOF). Cut two 2-1/2" x 37-1/2" and 1-1/2" x 20-1/2" strips from the length of fabric (LOF). Cut eight horizontal and eight vertical 2-1/4" x 6-1/2" strips.
CX3591 Winter	2/3 yard	Fussy cut one 20-1/2" square. Cut three 6-1/2" squares, Cut one 6" x 22-1/2" horizontal strip from the top of the panel and one 6" x 22-1/2" horizontal; strip from the bottom of the panel.
CX3592 Winter	2/3 yard	Cut two 6" x 22-1/2" vertical strips. Cut two 6-1/2" squares.
CX3060 Stone	3/8 yard	Cut five 2-1/4" x WOF strips for binding.
K1060	Fat Quarter	Cut one 7" square and two 7-1/2" squares.
CM376 Glimmer	Fat Quarter	See instructions to cut eight snowflakes.
CM376 Orchid	Fat Quarter	Cut one 7" square and two 7-1/2" squares.
CM376 Blossom	Fat Quarter	Cut four 6-1/2" squares and four 7-1/2" squares.
CM376 Wedgewood	Fat Quarter	Cut one 7" square and two 7-1/2" squares.
CM376 Powder Blue	Fat Quarter	Cut one 7" square and two 7-1/2" squares.

You will also need:

54" x 54" backing
54" x 54" batting
Threads to match Optional: Metallic Silver machine embroidery thread
Scissors, straight pins, acrylic ruler, mat, rotary cutter
Fusible Web

Disclaimers

- This pattern is provided as a courtesy to quilt stores, catalogs and quilters. Michael Miller Fabrics, LLC is not responsible for the accuracy of any kits packaged to accompany this pattern. Please direct any inquires to the kit maker.
- Yardage requirements for this pattern may allow for excess yardage to accommodate specific placement of motifs or to allow for any fussy-cutting to achieve the finished quilt design.
- While every attempt has been made to give accurate measurements, yardage requirements and construction directions, this does not allow for personal variations in measuring, cutting and or sewing. the enclosed directions were used in the construction of the original quilt.

Assembly Instructions:

- 01) Sew one 1-1/2" x 20-1/2" CX2932 strip to the top and bottom of the 20-1/2" CX3591 square. Sew one 1-1/2" x 22-1/2" CX2932 strip to each side of the 20-1/2" square to make the quilt top.
- 02) Sew one 6" x 22-1/2" CX3591 Winter strip to the top and bottom of the quilt top.
- 03) To make the smaller quarter-square triangles corner units, take one 7" CM376 Orchid, square and cut it across both diagonals to make four triangles. Repeat with each 7" K1060, CM376 Wedgewood and CM376 Powder Blue square.
- 04) Take one triangle of each color and sew them together to make one square. Repeat to make four quarter-square triangle blocks. Trim them to measure 6".
- 05) Following the manufacturer's instructions and trace eight snowflakes onto the paper side of the fusible web. Roughly cut out each shape outside the lines. Press the template onto the back side of the CM376 Glimmer. Cut out each snowflake on the drawn lines.
- 06) Press one snowflake to each quarter-square triangle block and machine applique the raw edges using silver metallic thread. Set aside the remaining snowflakes.
- 07) Sew one quarter-square triangle to the top and bottom of each 6" x 22-1/2" CX3592 Winter strip. Sew the strips to each side of the quilt top.
- 08) Sew one 2-1/2" x 33-1/2" to the sides of the quilt. Sew one 2-1/2" x 37-1/2" to the top and bottom of the quilt top.
- 09) To make the larger quarter-square triangles corner units, take one 7-1/2" CM376 Orchid, square and cut it across both diagonals to make four triangles. Repeat with each 7-1/2" CM376 Blossom, CM376 Wedgewood and CM376 Powder Blue square.
- 10) Take one triangle of each color and sew them together to make one square. Repeat to make eight quarter-square triangle blocks. Trim them to measure 6-1/2" square.
- 11) Fuse the remaining four snowflakes to four 6-1/2" CM376 Blossom squares. Machine applique the raw edges to finish the snowflake blocks.
- 12) Refer to the quilt photo for block placement. For each side row, starting and ending with a block, sew together five 6-1/2" blocks and four 2-1/4" x 6-1/2" horizontal CX2932 Grey strips. Make two side outer borders. Sew the borders to the quilt top.
- 13) For the top border, starting and ending with a block, sew together seven 6-1/2" blocks and four 2-1/4" x 6-1/2" CX2932 Grey vertical strips. Repeat to make the bottom row. Sew the top and bottom rows to the quilt top.
- 14) Layer, quilt and bind as desired.