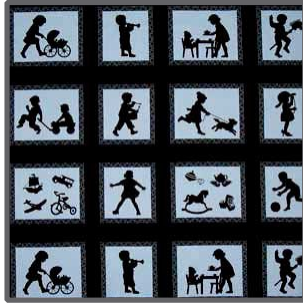


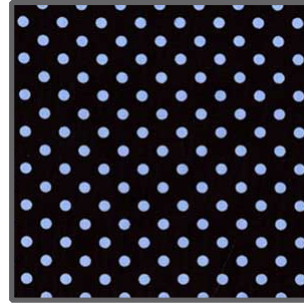
## FABRIC REQUIREMENTS



**CX3824 - Blue  
Silo Kids Border  
1 yard**



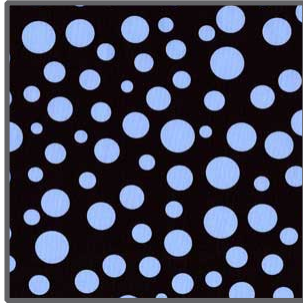
**CX3825 - Blue  
Silo Kids Vignettes  
1/4 yard**



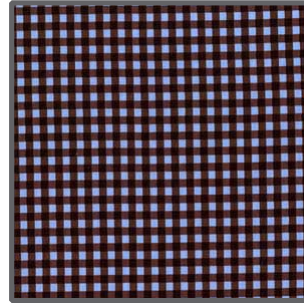
**CX2490 - Blue  
Dumb Dot  
(1) Fat 1/8**



**CX3295 - Blue  
Lolli Dot  
1/4 yard**



**CX3295 - Boy  
Lolli Dot  
1/8 yard**



**CX3248 - Blue  
Kid Check  
1/4 yard**



**CX3821 - Blue  
Boys Play  
3/4 yard**



**Jet Brown  
3/4 yard**

# Silhouette Boys



Size: Approximately 40"W x 51"H

Quilt designed by Marinda Stewart  
Skill Level: Beginner

**Backing - 1 1/2 YD x 45" Wide and Batting - 45" x 55"**

**Note: Refer to website for Girl version**



118 West 22nd Street 5th Floor New York, NY 10011  
Tel: 212.704.0774 Fax: 212. 633. 0272 email: info@michaelmillerfabrics.com

www.michaelmillerfabrics.com

## Materials

Fabric	Yardage	Cutting
Silo Kids Border CX3824 Blue	1 yard Center each motif to prevent partial figures	Cut (1) 28 1/2" x 7 1/2" boys on blue Cut (1) 28 1/2" x 10" boys on brown with border Cut (1) 28 1/2" x 7 1/2" diamonds - Cut in half lengthwise along blue diamond
Silo Kids Vignettes CX3825 Blue	1/4 yard or amount needed to get the desired motifs	Cut (1) 25 1/2" x 8"
Dumb Dot CX2490 Blue	(1) Fat 1/8	Cut (2) 8" x 2"
Lolli Dot CX3295 Blue	1/4 yard	Cut (2) 2" x 28 1/2" and (1) 2 1/2" x 28 1/2"
Lolli Dot CX3295 Boy	1/8 yard	Cut (1) 2 1/2" x 28 1/2"
Kid Check CX3248 Blue	1/4 yard	Cut (2) 1 1/2" x 28 1/2" and (2) 1 1/2" x 41 1/2"
Boys Play CX3821 Blue	3/4 yard	Cut (2) 5" x 41 1/2" and (2) 5" x 40 1/2"
Jet Brown	3/4 yard	Cut (2) 1" x 28 1/2" Cut (2) 1" x 41 1/2" Cut (2) 1" x 31 1/2" Cut (5) 2 1/4" x Width Of Fabric

### Additional Materials:

1 1/2 Yards of 45" wide backing, 45" x 55" Batting, Thread to match, Straight Pins, Scissors, Acrylic Ruler, Rotary Cutter, and Mat.

### Disclaimers

This pattern is provided as a courtesy to quilt stores, catalogs, and quilters. Michael Miller Fabrics, LLC is not responsible for the accuracy of any kits packaged to accompany this pattern. Please direct any inquiries to the kit maker.

Yardage requirements for this pattern may allow for excess yardage to accommodate specific placement of motifs or to allow for any fussy-cutting to achieve the finished quilt design.

While every attempt has been made to give accurate measurements, yardage requirements, and construction directions; this does not allow personal variations in measuring, cutting, and or sewing. The enclosed directions were used in the construction of the original quilt.

### Directions

1. Starting at the top of the quilt sew one 1" Jet Brown strip to the bottom of one half of the CX3824 Blue Diamonds.
2. Sew one 2" CX3295 Blue strip to the bottom.
3. Sew one CX3824 boys on blue strip to the bottom.
4. Sew one 2 1/2" CX3295 boy strip to the bottom.
5. Sew one CX2490 8" x 2" strip to each end of the CX3825 panel to make 28 1/2". Sew to the bottom.
6. Sew one 2 1/2" CX3295 blue strip to the bottom.
7. Sew CX3824 10" strip to the bottom of the quilt.
8. Sew one 2" CX3295 Blue to the bottom of the quilt.
9. Sew one 1" Jet Brown to the bottom.
10. Sew other half of CX3824 Diamonds to the bottom as shown on the cover.
11. Sew one 28 1/2" CX3248 to the top and bottom of the quilt.  
Sew one 41 1/2" CX3248 to each side.
12. Sew one 1" x 41 1/2" Jet Brown to each side of quilt.  
Sew one 1" x 31 1/2" Jet Brown to the top and bottom.
13. Sew one 5" x 41 1/2" CX3821 to each side of quilt.  
Sew one 5" x 40 1/2" CX3821 to the top and bottom.
14. Layer backing, batting and quilt top. Baste.
15. Quilt as desired.
16. Piece Jet Brown to make binding. Bind quilt to finish.