

Fabric Requirements



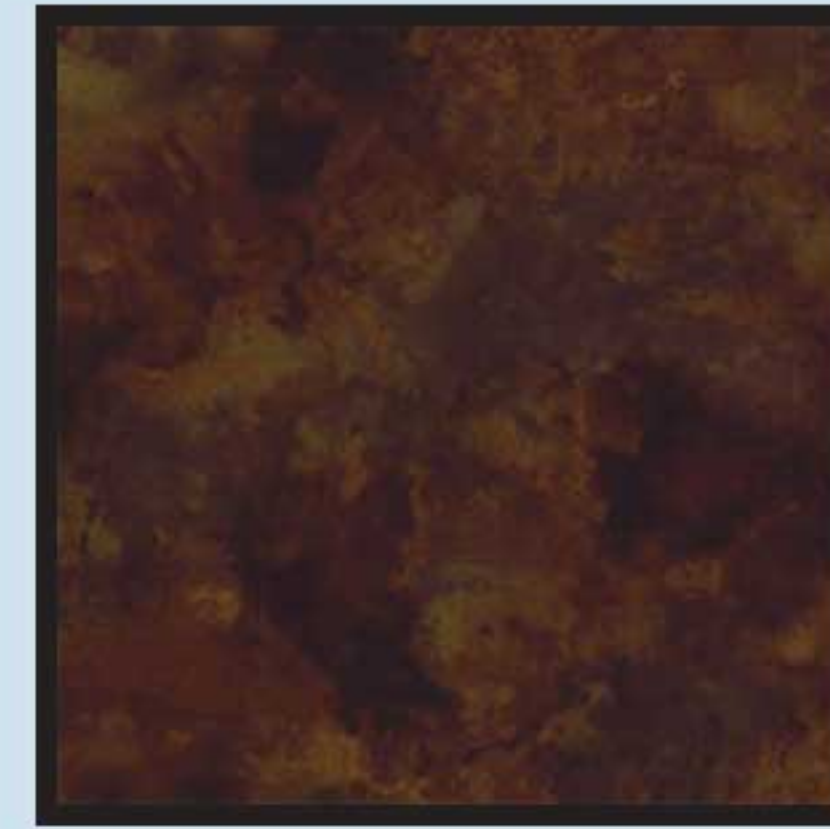
**CX3665 Fall
Autumn Forest**
1-1/8 yard



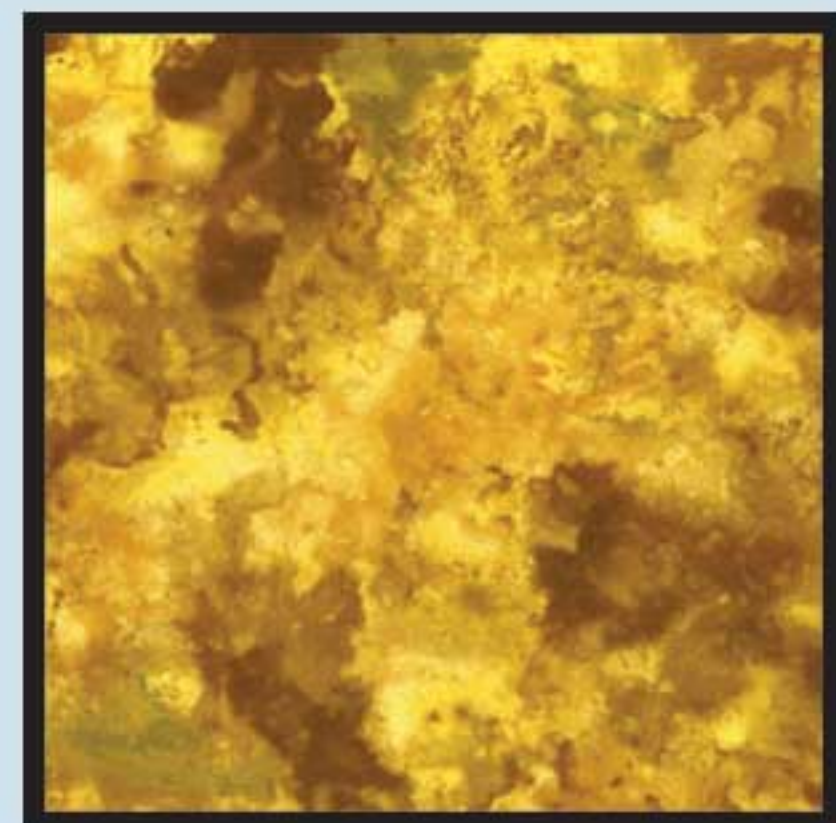
**CX3593 Fall
Autumn Lake**
7/8 yard



**CX3586 Blue
Serenity Sky**
1 yard



**CX3060 Bark
Water Spot**
3/8 yard



**CX3060 Yellow
Water Spot**
3/8 yard



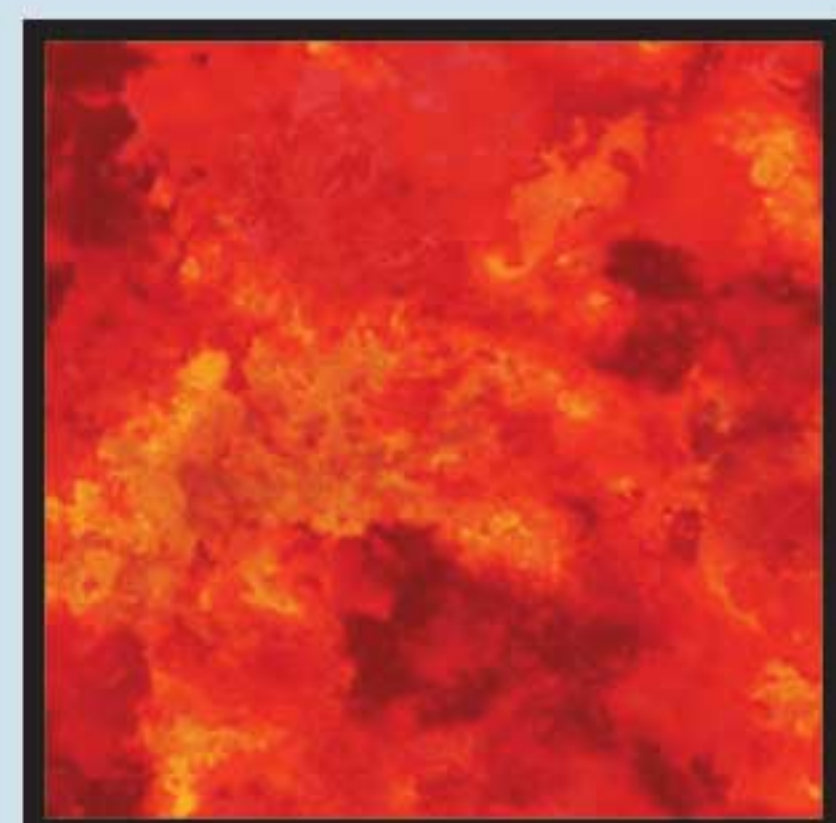
**CX3238 Claret
Alloy**
1/2 yard



Jet Brown
3/8 yard



**K1148
Krystal**
Fat 1/8



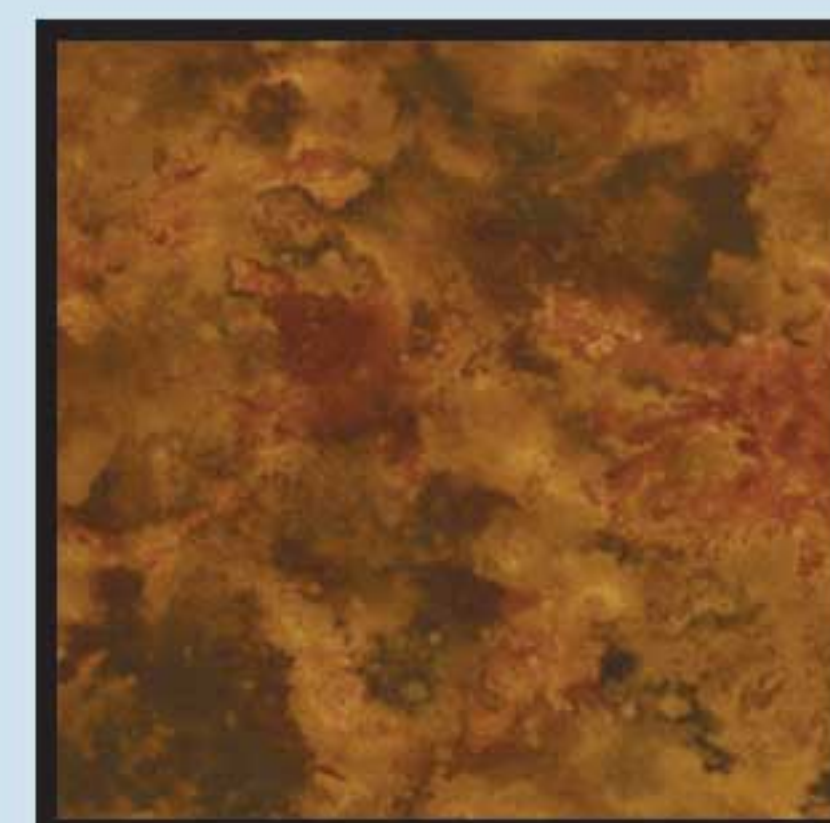
**CX3060 Lava
Water Spot**
Fat 1/8



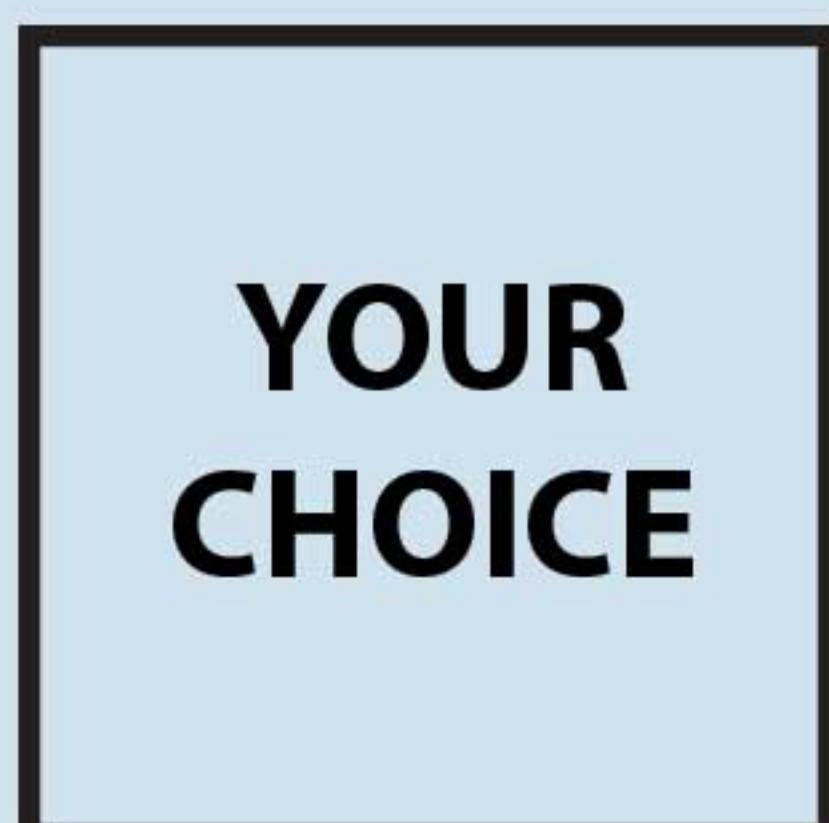
**CX3060 Cedar
Water Spot**
Fat 1/8



**K1122
Krystal**
Fat 1/8



**CX3060 Amber
Water Spot**
1/8 yard



**Backing
Your Choice**
55" x 55"



Batting
55" x 55"

Autumn Leaves



Quilt measures approximately 50" x 50"

Quilt designed by Marinda Stewart



118 West 22nd Street 5th Floor New York, NY 10011
Tel: 212-704-0774 Fax 212-633-0272 Email: info@michaelmillerfabrics.com
www.michaelmillerfabrics.com

Autumn Leaves

Quilt designed by Marinda Stewart. Quilt measures approximately 50" x 50"

Always measure the quilt top before cutting border lengths.

Fabric	Yardage	Cutting
CX3665 Fall	1-1/8 yards*	Cut one 8-1/2" x 34-1/2" strip from the width of fabric (WOF). Cut two 8-1/2" x 32-1/2" strips from the length of fabric (LOF)
CX3393 Fall	7/8 yard	Cut one 22-1/2" square. Cut four 4-1/2" squares from the sky. Cut seven 4-1/2" squares from the land and trees.
CX3586 Blue	1 yard*	Cut one 8-1/2" x 34-1/2" strip from the WOF. Cut two 8-1/2" x 24-1/2" strips from the LOF. Cut eight 4-1/2" squares.
CX3060 Bark	3/8 yard	See instructions to free hand cut two trees
CX3060 Yellow	3/8 yard	See instructions to cut leaves.
CX3185 Wine	1/2 yard	Cut two 1-1/2" x 34-1/2" strips, two 1-1/2" x 32-1/2" strips, two 1-1/2" x 24-1/2" strips and two 1-1/2" x 22-1/2" strips.
Jet Brown	3/8 yard	Cut five 2-1/4" x WOF strips for binding.
K1148	Fat 1/8	See instructions to cut leaves.
CX3060 Lava	Fat 1/8	See instructions to cut leaves.
CX3060 Cedar	Fat 1/8	See instructions to cut leaves.
K1122	Fat 1/8	See instructions to cut leaves.
CX3060 Amber	1/6 yard	Cut nine 4-1/2" squares.

You will also need:

55" x 55" backing
55" x 55" batting
Threads to match
Scissors, straight pins, acrylic ruler, mat, rotary cutter
Fusible Web

* One way design-Extra yardage needed.

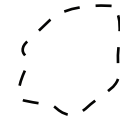
Disclaimers

- This pattern is provided as a courtesy to quilt stores, catalogs and quilters. Michael Miller Fabrics, LLC is not responsible for the accuracy of any kits packaged to accompany this pattern. Please direct any inquires to the kit maker.
- Yardage requirements for this pattern may allow for excess yardage to accommodate specific placement of motifs or to allow for any fussy-cutting to achieve the finished quilt design.
- While every attempt has been made to give accurate measurements, yardage requirements and construction directions, this does not allow for personal variations in measuring, cutting and or sewing. the enclosed directions were used in the construction of the original quilt.

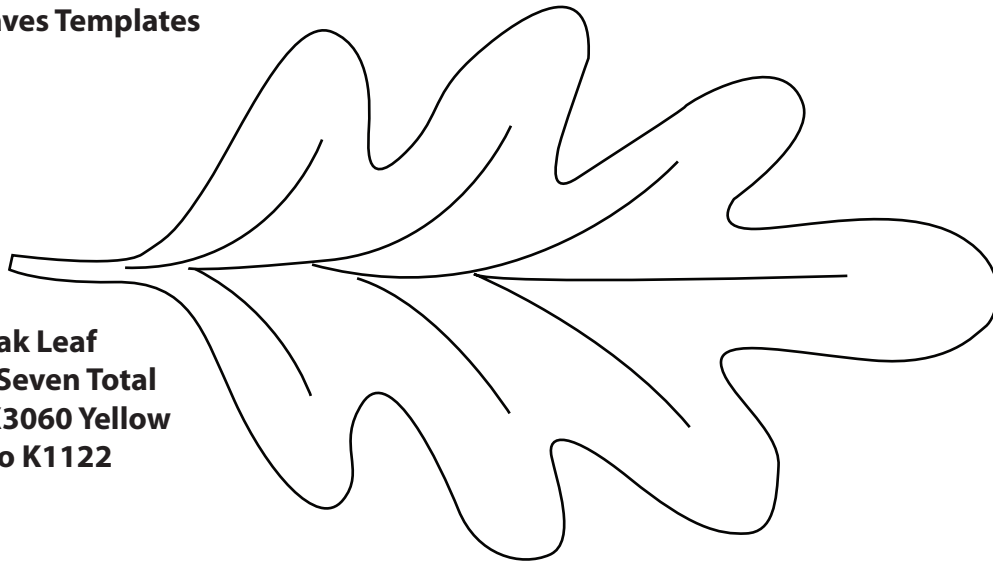
Assembly Instructions:

- 01) Sew one 1-1/2" x 22-1/2" CX3185 strip to the top and bottom of the 22-1/2" CX3393 square. Sew one 1-1/2" x 24-1/2" CX3185 strip to each side of the square to make the quilt top center.
- 02) Following the manufacturer's instructions trace the listed number of leaves onto the paper side of the fusible web. Roughly cut out each shape outside the drawn line and press them to the back of the listed fabrics.
- 03) Cut out each leaf on the drawn line.
- 04) Take eight 4-1/2" CX3586 squares, nine 4-1/2" CX3060 Amber squares and eleven 4-1/2" CX3393 squares, refer to the quilt photo and lay out all the squares around the quilt top center. Position and press all the leaves to the different 4-1/2" squares as shown or as desired.
- 05) Finish the raw edges of each leaf with a decorative stitch such as a buttonhole or satin stitch.
- 06) Layout the 4-1/2" squares again around the quilt top center. Sew the six top blocks together and sew them to the quilt top center. Repeat with the bottom blocks.
- 07) Sew together the left eight side blocks and sew the sewn blocks to the quilt top. Repeat with the right eight side blocks.
- 08) Sew one 1-1/2" x 32-1/2" CX3185 strip to the top and bottom of the quilt top. Sew one 1-1/2" x 34-1/2" CX3185 strip to each side of the quilt top.
- 09) Sew one 8-1/2" x 34-1/2" CX3586 strip to the top of the quilt top center. Sew one 8-1/2" x 34-1/2" CX3665 strip to the bottom of the quilt top center.
- 10) Take each 8-1/2" x 32-1/2" CX3665 strips and fussy cut the tree tops along the top edge of each strip.
- 11) Overlay the 8-1/2" x 30-1/2" CX3665 strip on top of one 8-1/2" x 36-1/2" CX3586 strip. Machine applique the fussy Cut tree tops to the CX3365 strip to make one side border. Repeat to make a second side border. Trim the excess fabric from the back and cut the side borders to measure 8-1/2" x 50-1/2".
- 12) Sew one border to each side of the quilt top.
- 13) To cut the trees, iron fusible web to the back side of CX3060 bark. Referring to the quilt photo, freehand draw two trees with branches. Cut out each tree and iron to the each side of the quilt top as shown. Draw and add extra branches as desired from the scrap fabric.
- 14) Iron fusible web onto the remaining CX3060 Yellow. Free-hand cut clusters of leaves. Arrange the leaves throughout the branches as shown. Machine applique the raw edges of the trees and branches to finish.
- 15) Layer, quilt and bind as desired.

Autumn Leaves Templates



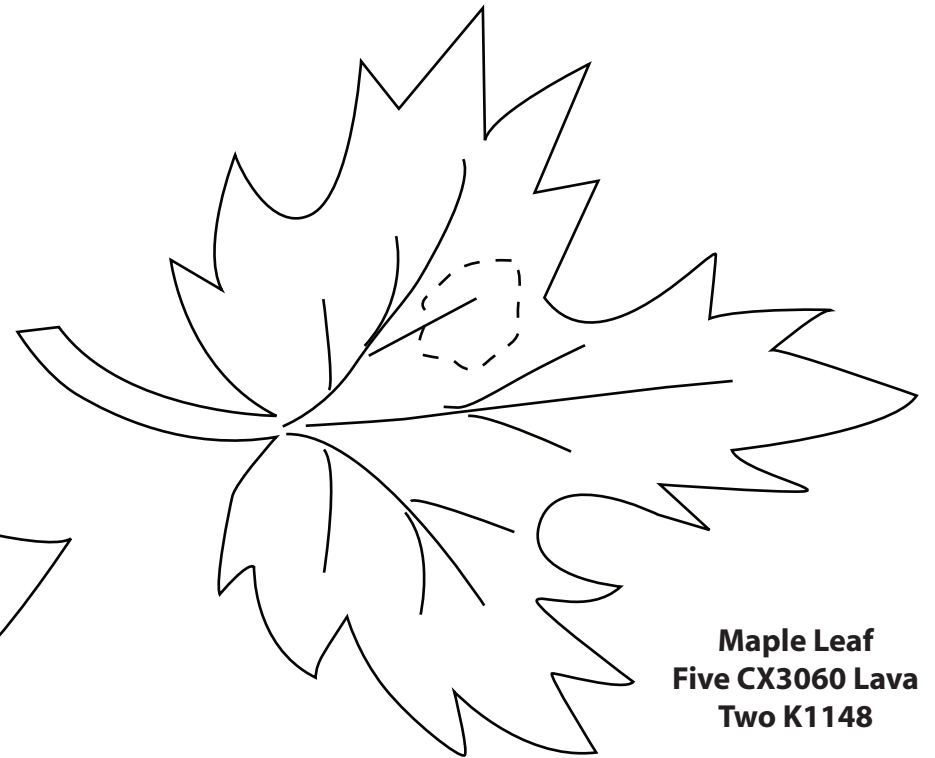
Randomly cut small holes in the leaves for added fall look.



Oak Leaf
Trace Seven Total
Five CX3060 Yellow
Two K1122



Elm Leaf
Trace Five Total
CX3060 Cedar



Maple Leaf
Five CX3060 Lava
Two K1148