

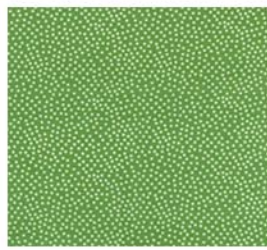
Fabric Requirements



CX1065 Banana
Garden Pindot
1 yard



CX1065 Black
Garden Pindot
1/4 yard



CX1065 Apple
Garden Pindot
5"x10" piece



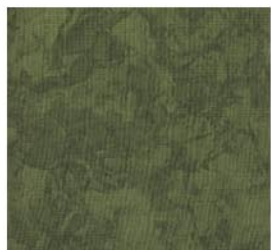
CX4199 Poppy
Pretty Poppy
7/8 yard



K4141 Red Coral
Krystal
5/8 yard



K1141 Dark Red Coral
Krystal
1/2 yard



K1156 Leaf Green
Krystal
3/8 yard



DC3904 Fire
Tiny Dots
1/4 yard



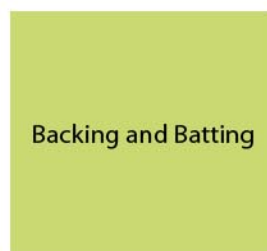
CX1492 Bubblegum
Ta Dot
1/4 yard



CX0274 Pink
Giddy Dot
Fat Quarter



CX3584 Key Lime
Clown Stripe
1/8 yard



50" x 50"

08.21.09

Pretty Poppy Quilt



Size: Approximately 50" x 50"
Skill level: Confident Beginner

Quilt designed by Marinda Stewart



118 W 22nd Street • 5th Floor • New York, NY 10011
Tel: 212.704.0774 • Fax 212,633,0272 • info@michaelmillerfabrics.com
www.michaelmillerfabrics.com • www.makingitfun.blogspot.com

Pretty Poppy Quilt

Quilt Designed by Marinda Stewart. Quilt measures approximately 50" x 50".

Always measure the quilt top before cutting borders.

Skill level: Confident Beginner

Fabric	Yardage	Cutting
Garden Pindot CX1065 Banana	1 yard	1 - 28" square, 20 - 4" squares, 4 - 3½" squares, 4 - 6½" squares
Garden Pindot CX1065 Black	¼ yard	see pattern, 6 petal bases
Garden Pindot CX1065 Apple	5" x 10" piece	see pattern, flower center
Pretty Poppy CX4199 Poppy	⅞ yard	4 - 6½" x 38½"
Krystal K4141 Red Coral	⅝ yard	see pattern, 6 petals
Krystal K1141 Dk. Red Coral	½ yard	see pattern, 4 petal details 5 - 2½" x WOF
Krystal K1156 Leaf Green	⅝ yard	see pattern, 1 large leaf, stem, flower center, 4 cornerstone leaves
Tiny Dots DC3904 Flre	¼ yard	2 - 1½" x 28½", 2 - 1½" x 30½"
Ta Dot CX1492 Bubblegum	¼ yard	2 - 1½" x 36½", 2 - 1½" x 38½"
Giddy Dot CX0274 Pink	Fat Quarter	20 - 4" squares
Clown Stripe CX3584 Key Lime	⅓ yard	2 - 2¼" x WOF

Additional Materials

55" x 55" backing, 55" x 55" batting, fusible web, threads to match fabric for machine appliqué, scissors, straight pins, acrylic ruler, rotary cutter, mat.

Disclaimers

This pattern is provided as a courtesy to quilt stores, catalogs, and quilters. Michael Miller Fabrics, LLC is NOT responsible for the accuracy of any kits packaged to accompany this pattern. Please direct any inquiries to the kit maker.

Yardage requirements for this pattern may allow for excess yardage to accommodate specific placement of motifs or to allow for any fussy-cutting to achieve the finished quilt design.

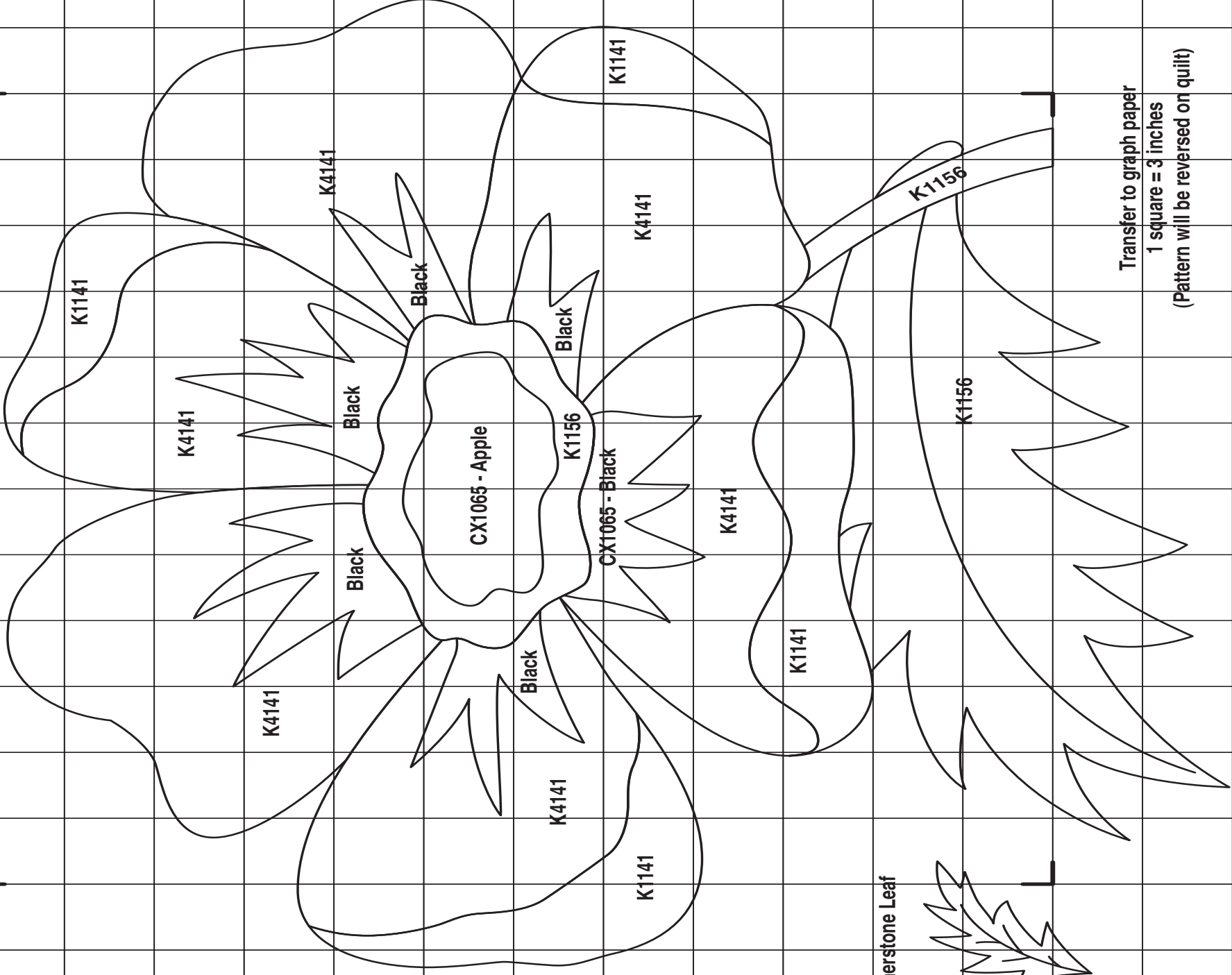
While every attempt has been made to give accurate measurements, yardage requirements and construction directions, this does not allow for personal variations in measuring, cutting and/or sewing. The enclosed directions were used in the construction of the original quilt.

Directions for appliqué poppy pattern

Transfer the appliqué grid design to graph paper. One square on the design equals one inch. The pattern will be reversed on the quilt. The corner marks on the appliqué grid indicate the area inside the TaDa CX1492 Bubblegum border.

Directions

- Sew one DC3904, 28½" piece to the top and bottom of the CX1065 Banana 28½" square. Sew one DC3904, 30½" piece to each side. Set aside.
- For the right square triangles, place one CX1065 Banana 4" square right sides together with one CX0274 Pink square. Draw a diagonal line from one corner to the opposite corner. Stitch ¼" on each side of the diagonal line. Cut apart on the diagonal line. Press open. Yield two right triangle squares. Make 40 squares total. Trim each to an accurate 3½" square.
- Make 4 rows of 10 triangle blocks each, pairing the colors as shown in the photo. Sew one row to the top and bottom of the quilt. Sew one CX1065 Banana 3½" square to each end of the remaining 10-block rows. Sew one pieced row to each side of the quilt.
- Sew one CX1492, 36½" strip to the top and bottom of the quilt. Sew one CX1492, 38½" strip to each side of the quilt.
- Sew on CX4199, 38½" strip to the top and bottom of the quilt. Sew one CX1065 Banana 6½" square to each end of the two remaining CX4199 strips. Sew one strip to each side of the quilt.
- For the appliqués, following the manufacturer's directions, trace the patterns on the paper side of the fusible web. Rough cut each piece. Iron the fusible web pattern pieces to the designated fabrics. Cut out. Refer to the photo for placement. Place the stem and large leaf on the quilt. Appliqué in place. Add the four small leaves to each of the four cornerstones. Appliqué in place. Place the large petals in the center of the quilt. Fuse in place. Add the darker petal edges to the four petals. Add the CX1065 Black petal bases to each petal. Appliqué in place. Place flower centers in the flower. Appliqué in place.
- Layer backing, batting, and quilt top. Baste. Quilt as desired.
- Piece K1141 as needed for binding. Bind all edges.
- For dimensional detail on flower center, sew two CX3584, 2½" strips end to end in a circle. Fold in half lengthwise. Press. Clip raw edges to within ¼" of the fold every ¼". With a threaded hand sewing needle, gather the fringe to the size of the outside of the flower center. Pin in place to fit. Top stitch the gathered fringe to the finished quilt.



K1141

K4141

K4141

K4141

Black

Black

Black

CX1065 - Apple

Black

K4141

Black

Black

CX1065 - Black

K1141

K4141

K1141

K4141

K1141

Cornerstone Leaf

K1156

K1156

Transfer to graph paper

1 square = 3 inches

(Pattern will be reversed on quilt)