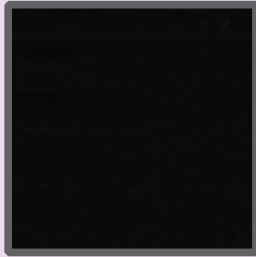


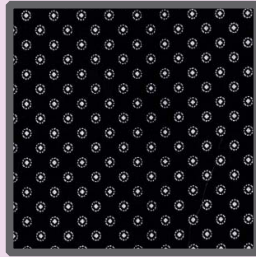
FABRIC REQUIREMENTS



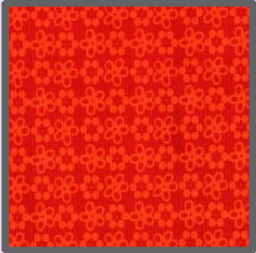
Palace Mystique
CJ3709 - Black
5/8 or 3/4 yard



Jet Black
1 1/4 yard



Brooke
CX3570 - Nite
3/8 yard



Pod Ditz
CX3662 - Clementine
1/2 yard



Pod Vine
CX3660 - Orchid
1/8 yard



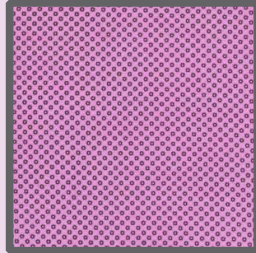
Garden Pindot
CX1065 - Orchid
1/8 yard



Hydrangea Blossom
CJ3801 - Pink
1/8 yard



Giddy Dot
CX0274 - Purple
1/8 yard



Mae
CX3318 - Orchid
1/8 yard



Bonnie
CX3561 - Clementine
1/8 yard



Hydrangea Bouquets
CJ3800 - Pink
1/8 yard



Fairy Frost
CM0376 - Fig
1 Fat Quarter

Batting - 45" x 55" and Backing - 45" x 55"

Palace Mystique Quilt



Size: Approximately 42"W x 50"W **Quilt designed by Marinda Stewart**
Skill Level: Confident beginner



118 West 22nd Street 5th Floor New York, NY 10011
Tel: 212.704.0774 Fax: 212. 633. 0272 Email: info@michaelmillerfabrics.com

www.michaelmillerfabrics.com

Materials

- 5/8 or 3/4 yard of Palace Mystique, CJ3709 – Black
- 3/8 yard of Brooke, CX3570 - Nite
- 1/2 yard of Pod Ditz, CX3662 - Clementine
- 1/8 yard of Pod Vine, CX3660 – Orchid
- 1/8 yard of Garden Pindot, CX1065 – Orchid
- 1 1/4 yards of Jet Black
- 1/8 yard of Hydrangea Blossom, CJ3801 – Pink
- 1/8 yard of Giddy Dot, CX0274 – Purple
- 1/8 yard of Mae, CX3318 – Orchid
- 1/8 yard of Bonnie, CX3561 – Clementine
- 1/4 yard of Hydrangea Bouquets, CJ3800 - Pink
- 1 Fat Quarter of Fairy Frost, CM0376 – Fig

- 45" x 55" Backing
- 45" x 55" Batting
- Threads to match, Scissors, Straight Pins, Rotary Cutter, Acrylic Ruler, Mat
- Optional : Template Plastic

Disclaimers

This pattern is provided as a courtesy to quilt stores, catalogs, and quilters. Michael Miller Fabrics, LLC is not responsible for the accuracy of any kits packaged to accompany this pattern. Please direct any inquiries to the kit maker.

Yardage requirements for this pattern may allow for excess yardage to accommodate specific placement of motifs or to allow for any fussy-cutting to achieve the finished quilt design.

While every attempt has been made to give accurate measurements, yardage requirements, and construction directions; this does not allow personal variations in measuring, cutting, and or sewing. The enclosed directions were used in the construction of the original quilt.

Directions

1. From Jet Black cut one 25 1/2" x 43 1/2" piece.
Note: One 21 1/2" wide motif is used in the center panel. Refer to quilt for placement and adjust fabric accordingly.
2. From CJ3709 cut one piece 21 1/2" Wide x 39 1/2" High. Fold in half vertically and horizontally to 1/4 the size. Mark the middle of the panel.

Free hand cut the curved corner to make an oval.

3. From CM0376 cut 1 1/4" wide bias strips, piece together to make 108" total. Sew bias to curved edges of CJ3709 panel. Ease bias on curves. Overlap raw edges. Turn under top raw edge to finish.
4. Fold Jet Black panel horizontally and vertically to establish the center. Place CJ3709 panel on top of Jet Black matching center marks in each. Turn under 1/4" on bias trim of CJ3709 panel. Pin in placing centering the panel on the background. Topstitch panel to the background on both sides of the bias edging. Remove excess background from the back of the panel.
5. Using template 'A' cut four blades each from CX3660, CX1065, CJ3801, CX0274, CX3318, and four 1/4 circles from CX3561. Sew one blade of each color together to make four fan units. Topstitch a 1/4 circle to the base of each fan. Machine appliqué one fan in each corner of the quilt panel.
6. From CX3662 cut two pieces 1" x 43 1/2 and sew to each side of the quilt. Cut two pieces 1" x 26 1/2 and sew to the top and bottom of the quilt.
7. From CJ3800 cut two pieces 1 1/2" x 44 1/2" and sew to each side of the quilt. Cut two pieces 1 1/2" x 28 1/2" and sew to the top and bottom of the quilt.
8. From CX3570 cut two pieces 2 1/2" x 28 1/2". Sew to the top and bottom of the quilt. Cut two pieces 2 1/2" x 50 1/2" (piece as needed). Sew to each side.
9. For the fan blocks use Template 'B' blade. Cut (20) each from CX3660, CX1065, CJ3801, CX0274, and CX3318. Cut (20) 'B' 1/4 circles. From Jet Black cut (20) 5 1/2" squares. To make one block – sew one of each color blade together. Place on top of 5 1/2" square. Place one 1/4 circle in the corner to cover raw edges. Machine appliqué fan blades and 1/4 circle in place. Make (20) blocks total.
10. Sew two fan blocks together to make one open fan. Make (10) pairs. Alternating the direction of the fans. Sew five pairs together into two 5 1/2" x 50 1/2" strips. Sew one strip to each strip to each side of the quilt.
11. Layer backing, batting, and quilt top. Baste.
12. Quilt as desired.
13. From CX3662 cut binding. Piece as needed. Bind quilt to finish.

Palace Mystique Templates

