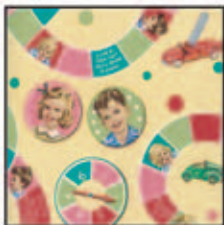


## Fabric Requirements



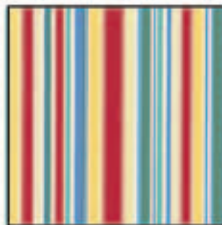
DJ2731 Sally Look  
Cream  
8 squares



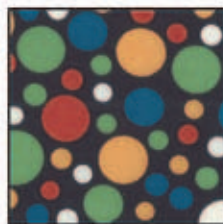
DJ3156 Game Board  
Yellow  
1/2 yard



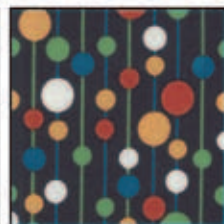
CX0940 Gingham  
Red  
Fat quarter



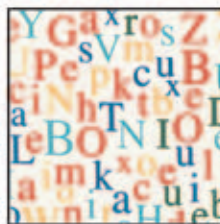
CX1684 Cha Cha Stripe  
Yellow  
Fat quarter



CX3136 Play Dots  
Black  
Fat quarter



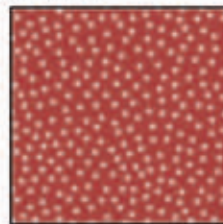
CX3138 Pom Pom Dot  
Black  
Fat quarter



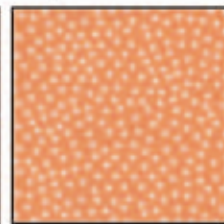
CX3155 Word Search  
Retro  
Fat quarter



DJ3157 Sentence Structure  
White  
Fat quarter



CX1065 Garden Pindot  
Cherry  
Fat quarter  
plus 3/8 yard  
for suggested binding



CX1065 Garden Pindot  
Tangerine  
Fat quarter



Suggested Backing  
DJ3152 Circle Sally  
Blue  
55"x55"



# Dick and Jane™ Sally Look Quilt



Designed by Marinda Stewart Finished quilt approximately 50" x 50" Skill Level: Confident Beginner



- Acrylic ruler, mat and rotary cutter
- 100% cotton thread to match
- 55"x55" Batting



118 West 22nd Street 5th Floor New York, NY 10011

Tel: 212.704.0774 Fax: 212.633.0272 Email: info@michaelmillerfabrics.com

www.michaelmillerfabrics.com

