

Matching Game w/ Drawstring Pouch

Prepared by Joanna Armour (www.stardustshoes.blogspot.com) For personal use only.



Use a 1/4" seam allowance unless otherwise noted.

Gather materials for the cards:

- 1-1/3 yards of CX3825_Blue Silo Kids Vignettes fabric. Make sure at the cutting counter to get 6 complete rows of the motifs. This amount will yield enough repeats to make two sets of the matching game. Any fewer than 6 rows will not give you enough repeats to make one set.
- Two sheets 14" x 18" InnerFuse double sided stiff fusible interfacing.
- 2/3 yard of CX2490_Blue Dumb Dot for the back of the cards.

1) Make the cards:

You will be using the square motifs to make eight cards (4 pairs).

Cut around each card leaving 1/4" edge around the frame. Cut a piece of stiff fusible interfacing and a piece of backing fabric to the same size as the front piece.



Following the instructions on the InnerFuse package to permanently fuse the front and back fabric to the interfacing. When cool, pink around the edges.



2) Gather Materials for the Bag:

For the outer body of the bag you'll need two pieces of fabric 13" x 13" (CX3821_Blue Boys Play). These need to be interfaced with lightweight interfacing.

The lining of the bag requires two pieces of fabric 13" x 13". (CX3295_Brown Lolli Dot)

Two pieces of fabric 2" x 13-1/2" for the casing. (CX2490_Blue Dumb Dot)

Two pieces of fabric 2" x 34" for the drawstrings. (CX3821_Blue Boys Play)



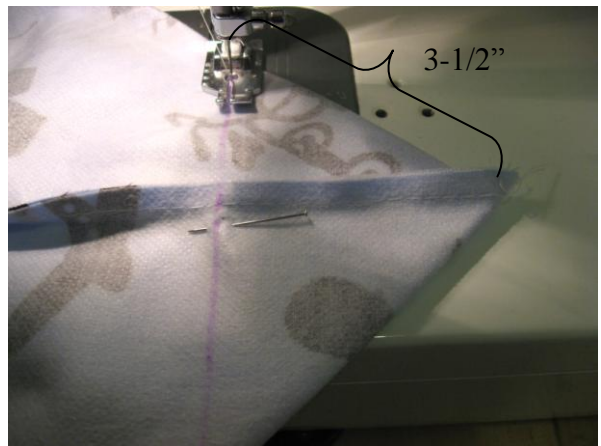
3) Create the Outside of the Bag:

Using the outer pieces, with right sides facing sew down one side, across the bottom and up the other side, leaving the top open.

Place a finger in one corner and make a point as pictured. Make sure the side seam is centered and also lined up with the side seam underneath (peek inside to check). Iron flat and pin in place.



Measure 3-1/2" down from the tip of the point to either side. Connect the dots to create a sewing line and sew directly on the line, reinforcing by backstitching at the beginning and end of the sewing line.



Trim off the corners to remove bulk. Turn the bag right side out.

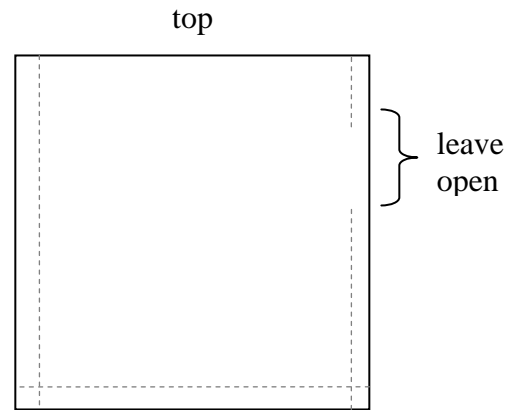


4) Create the Lining:

The lining is made in the same way as the outer body. However, when sewing down one of the sides, leave a two or three inch opening near the top for turning.

Create the box corners in the same way as in step 3, above.

Iron all seams open.



5) Attach the Lining:

The outside of the bag is already right side out. The lining is inside out. Place the outside of the bag inside the lining so that right sides are facing. Line up the side seams and pin in place. Place pins every 3 inches around the top.

Sew around the top of the bag.

Iron the seam open.



Using the opening in the lining, turn the bag right side out and push the lining into the body of the bag. Iron around the top so that it lays flat. Don't forget to sew shut the opening in the lining!



6) Create the Casing:

Fold the 2" x 13-1/2" fabric strip in half lengthwise and iron flat to create a center crease. Open it up, then fold and iron down either side of the fabric to meet the crease. Finish off one end by folding it down 1/4", refold the sides and press flat as pictured.



Line up the casing 1" down from the top of the bag. The finished side of casing should be about 1/4" from the side seam. Pin in place.



Now that the casing is pinned in place, finish off the raw edge using the same method as above, placing it ¼” from the side seam.



Attach the casing to the bag by sewing as to the edges as possible—first across the top, then the bottom.



Attach the other casing piece to the back of the bag in the same way.



7) Create the Drawstrings:

The drawstrings are made the same way as the casings, except that they are folded again and ironed along the center crease. Finish both ends of the drawstrings, as pictured below, and then sew along the length of the entire drawstring.



Insert a safety pin in the drawstring and pull it through the casing in the front, insert it into the back casing and pull it all the way through so that the safety pin comes out on the same side where it started. Tie a simple knot to connect the ends.

To insert the second drawstring, start on the other side of side of the bag and pull it through the back casing, insert it into the front casing (it will be a little bulky at this point), pull it all the way through, and tie the ends together.



Now your matching game is complete!

